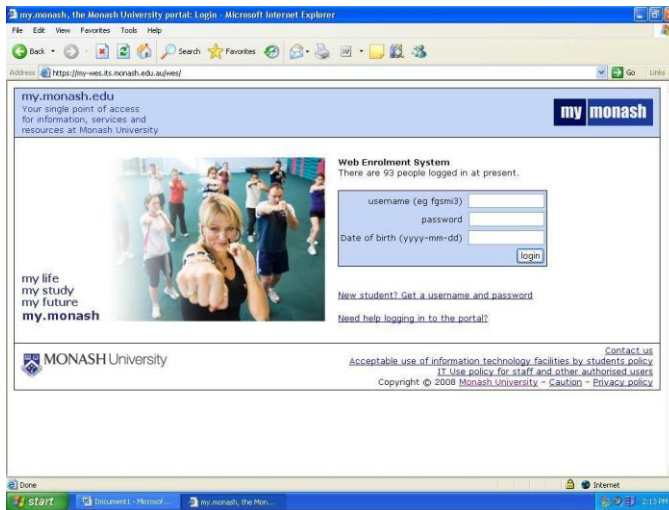
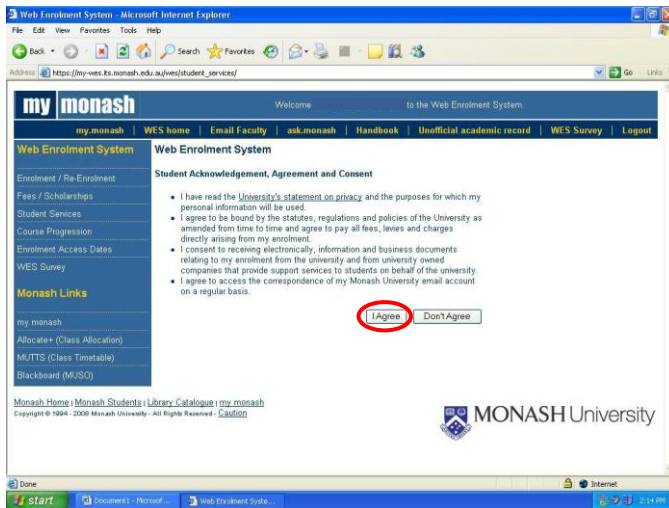


How to complete the Enrolment Questionnaire

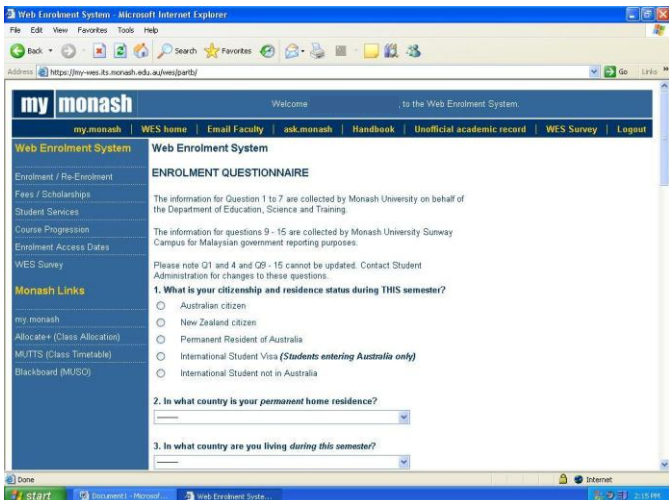
Step 1: Login to WES at <https://my.monash.edu.au/wes/>



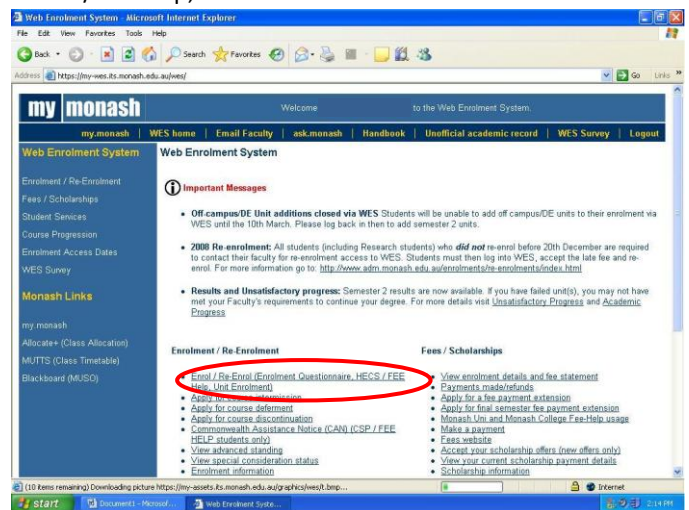
Step 3: Click 'I Agree'



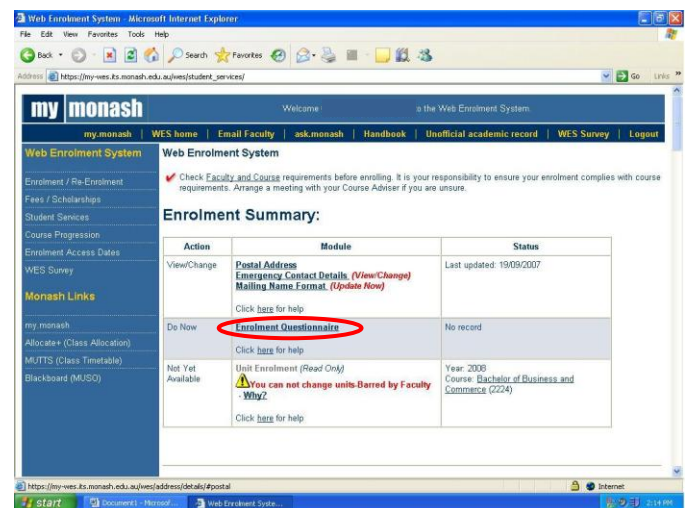
Step 5: Answer all 15 Questions and Click 'Submit'.



Step 2: Click on Enrol/Re-Enrol(Enrolment Questionnaire, HECS/FEE Help, Unit Enrolment



Step 4: Click on Enrolment Questionnaire



Step 6: If submission is successful a transaction number will be generated. Please print the page and bring it along during the Student ID photo session for verification purposes.

