

Mobile Access Client Installation Guide

Download client from :-

OS : Windows

https://supportcenter.checkpoint.com/supportcenter/portal/user/anon/page/default.psml/media-type/html?action=portlets.DCFileAction&eventSubmit_doGetdcdetails=&fileid=55515

OS : Windows (Alternate)

<https://drive.google.com/file/d/1JUwMQdlcNMxgpsmjm4O4lhiDKUFu0Ykg/view?usp=sharing>

OS : Mac OS X

https://supportcenter.checkpoint.com/supportcenter/portal/user/anon/page/default.psml/media-type/html?action=portlets.DCFileAction&eventSubmit_doGetdcdetails=&fileid=52910 (download disc image)

Installing the Client

Install the client on a supported Mac platform booted in 64-bit mode.

To install Endpoint Security VPN for Mac on a client computer:

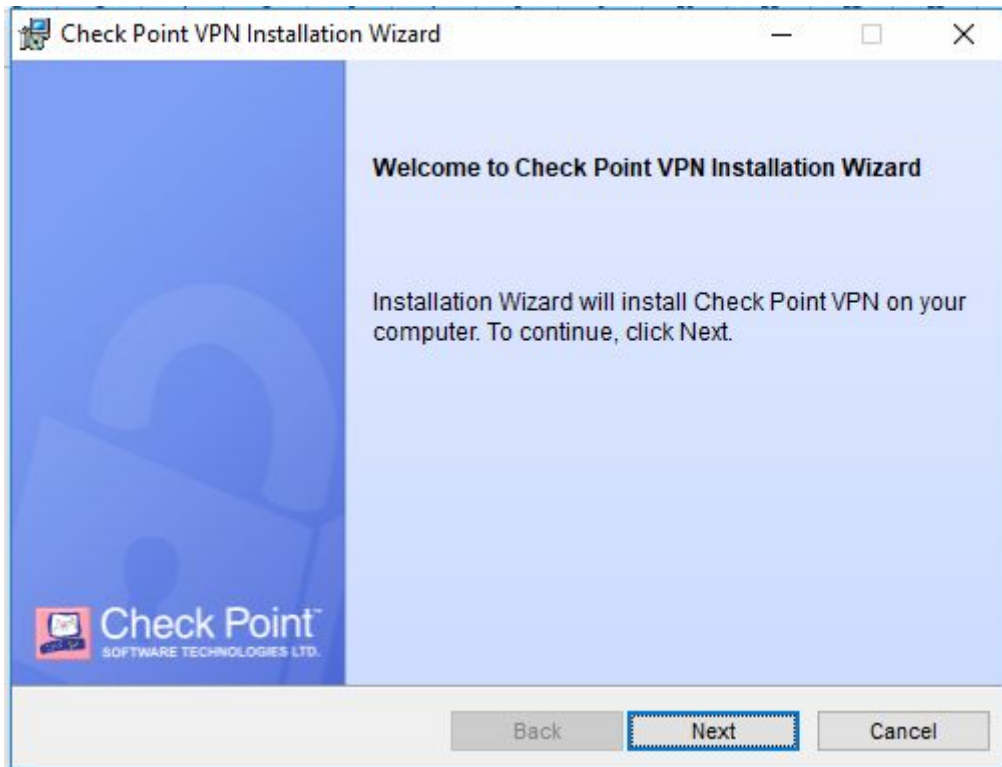
- 1.** Download the **Endpoint Security VPN for Mac E80.62 - Disc Image** file to the client computer.
- 2.** Double-click the file.
After the disk image mounts to the file system, a **Finder** window opens with the contents of the package.
- 3.** Double-click the **Endpoint_Security_VPN.pkg** file to start the installation.
- 4.** Follow the on-screen instructions.

*for Mac OS X client installation, please refer to guide

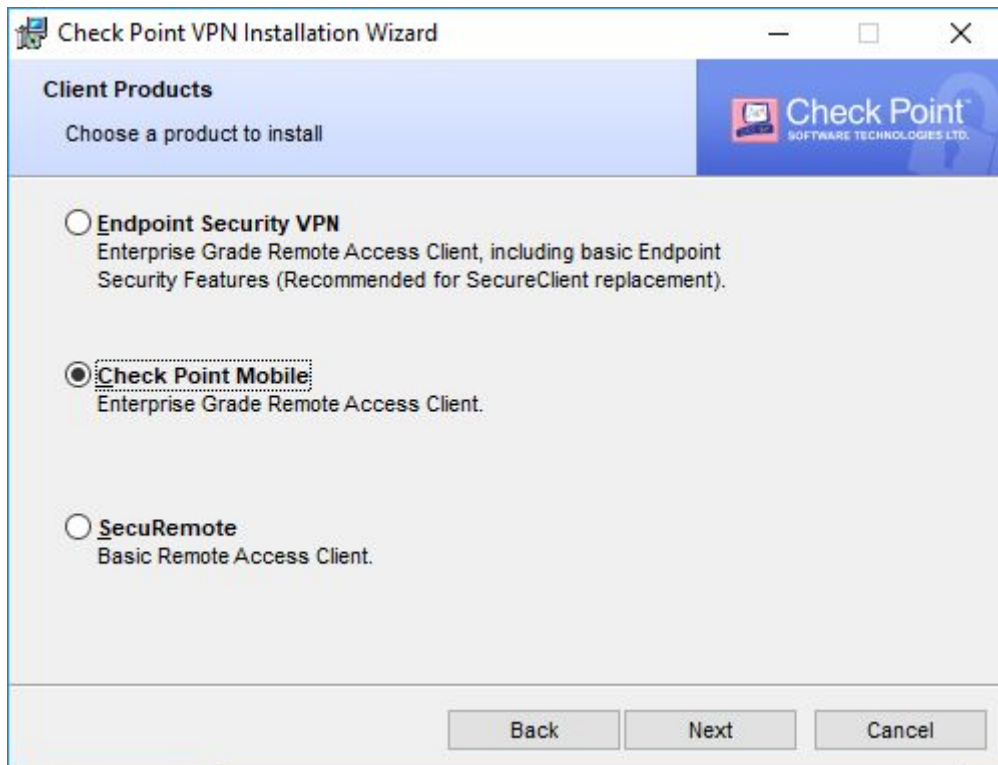
<https://drive.google.com/file/d/1c4qPbwFeG-V5qztJE1Nj1IRPfdjzm08K/view?usp=sharing> "Chapter 3 - Helping Your Users" on **Page 22**.

Below are installation steps for Windows and similarly to MAC OS.

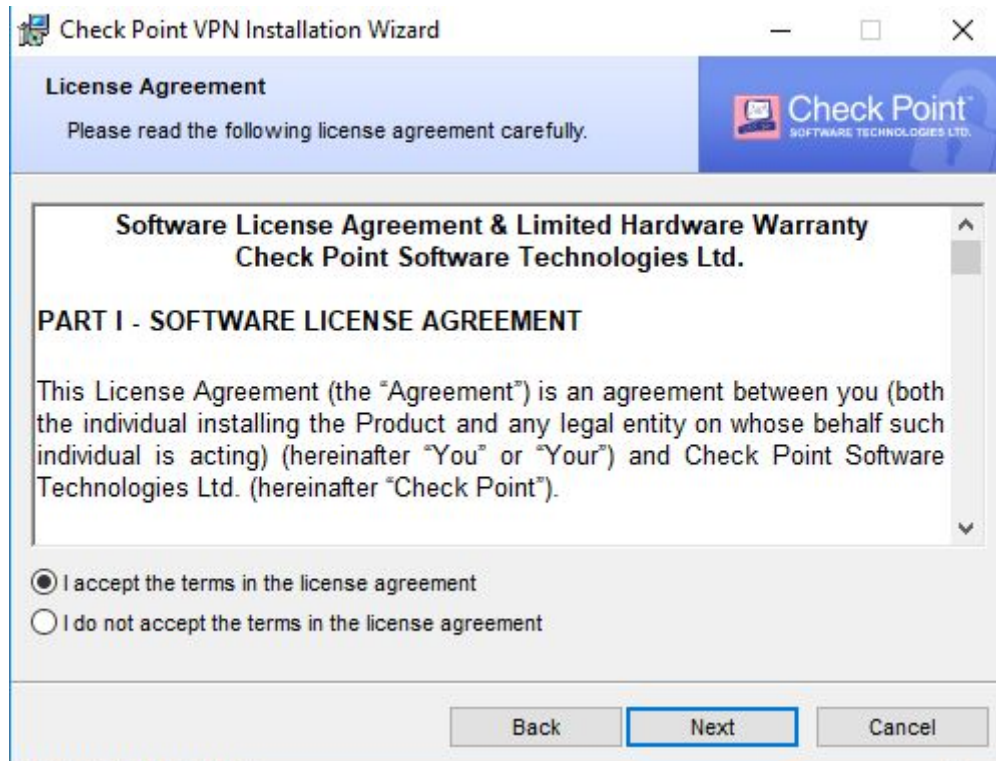
- 1) Launch the downloaded file `E80.70_CheckPointVPN.msi`, and windows below will pop out. Proceed to click 'Next'.



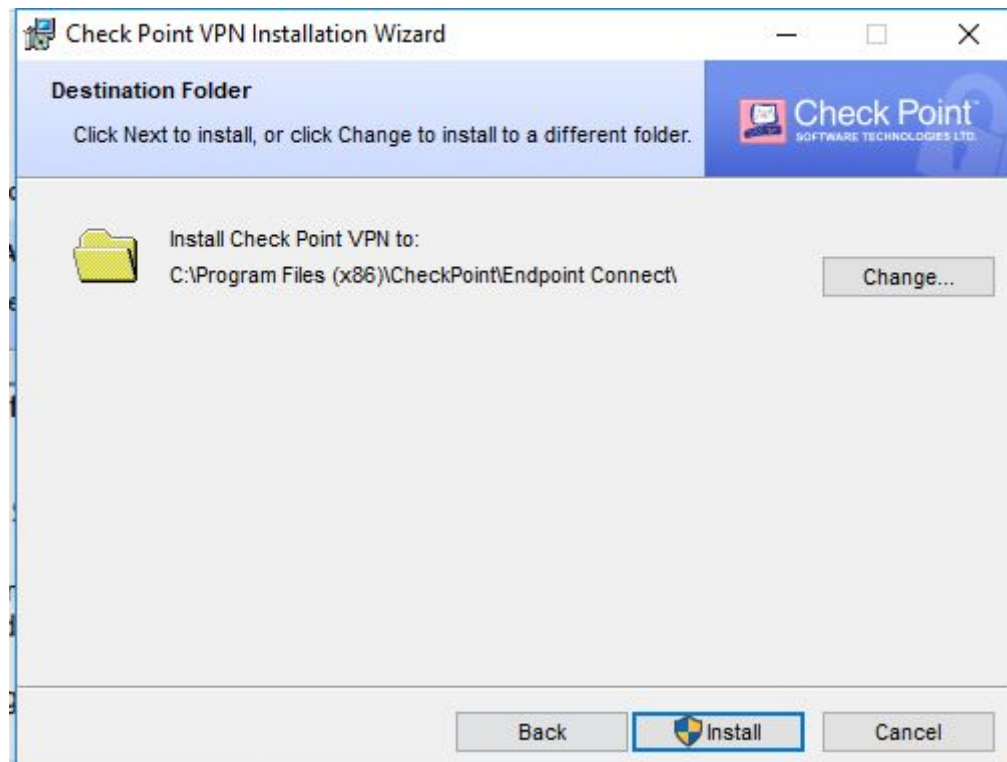
- 2) Select 'Check Point Mobile' and click 'Next'



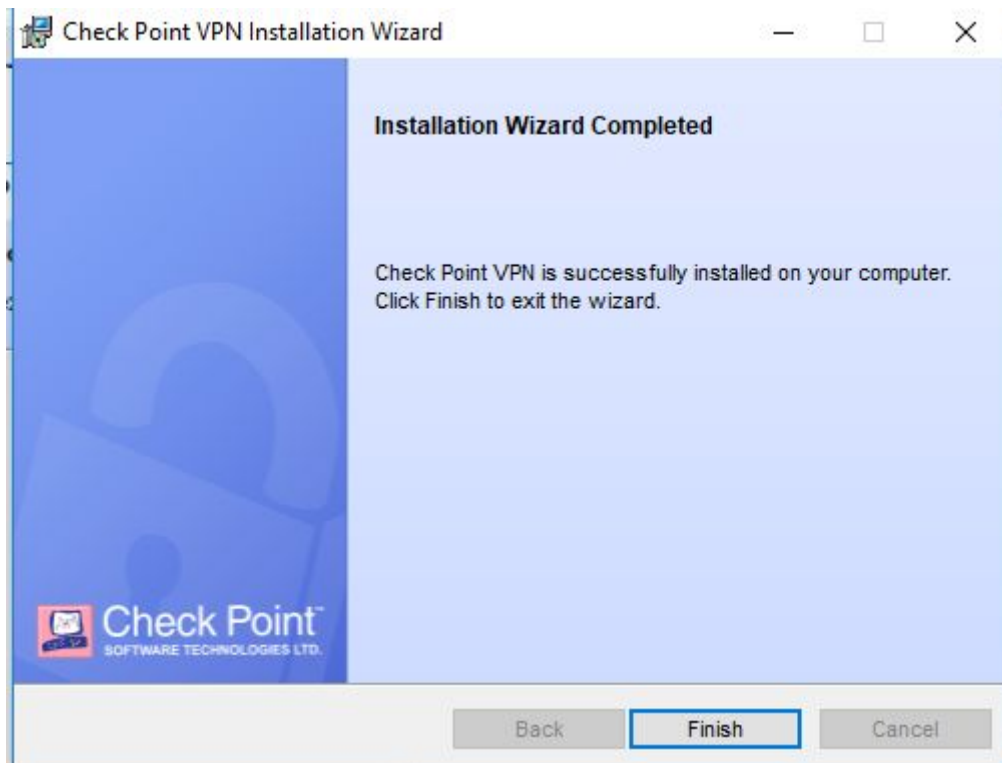
- 3) Select 'I accept the terms in the license agreement' and click 'Next'



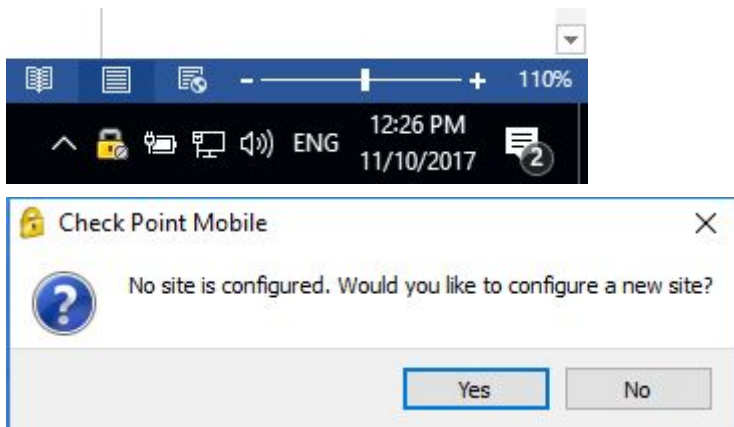
- 4) Click 'Install' and there will be a windows pop out asking for permission to install. Just click 'Allow' or 'Yes' for the installation.



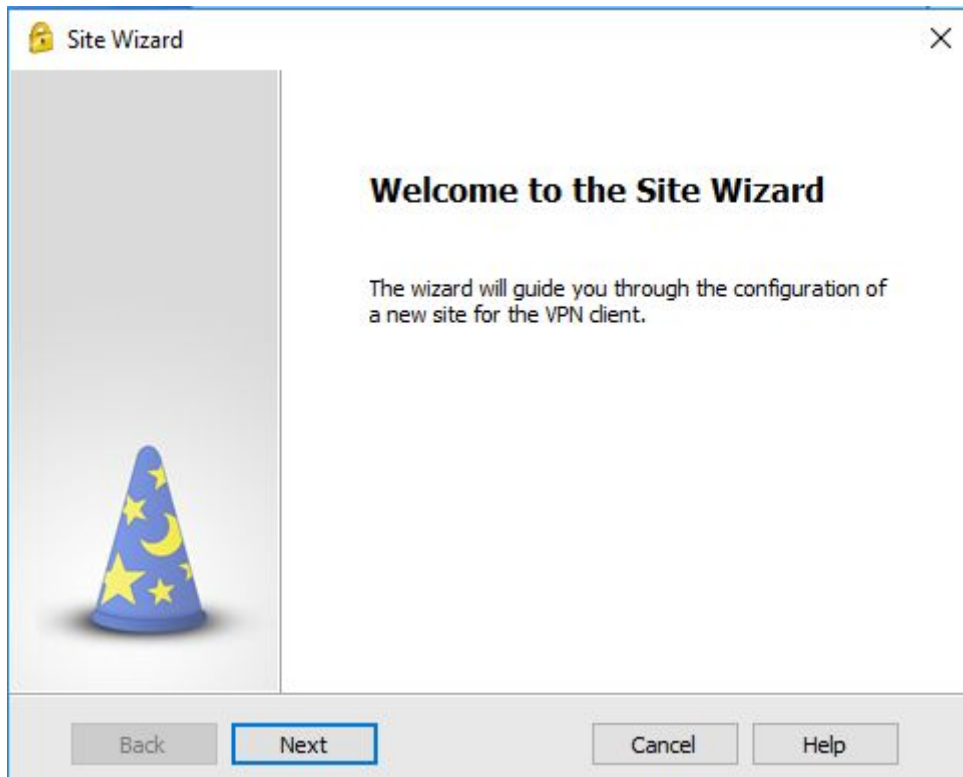
5) Once the installation completed, click 'Finish'



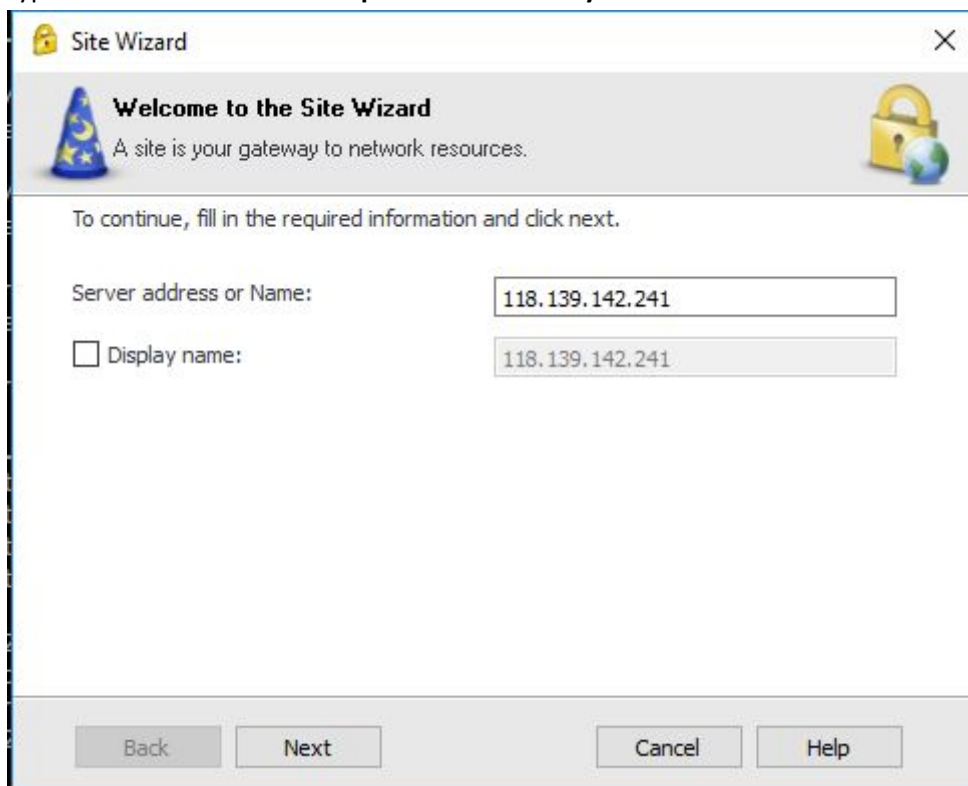
6) The 'check point mobile' icon will appear in your bottom left panel of your screen. Double click on it and it will pop out notification saying 'No site is configured...', proceed to click 'Yes'



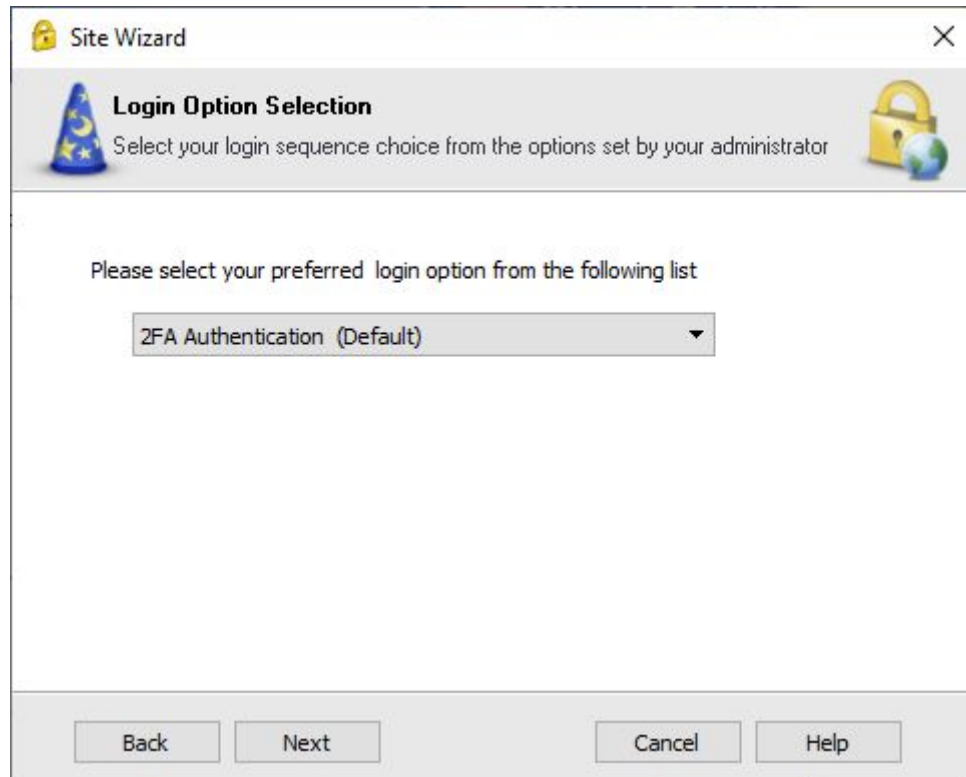
7) After that, a setup wizard will appear, then click 'Next'



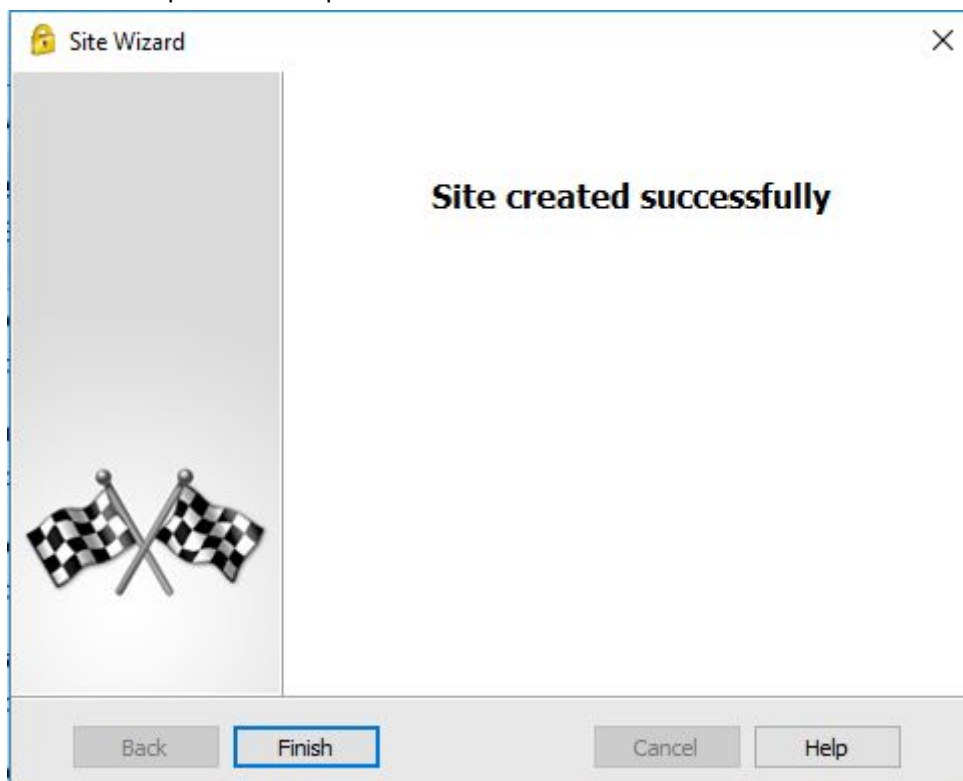
8) Type in **118.139.142.241** OR **vpn.monash.edu.my** and then click 'Next'



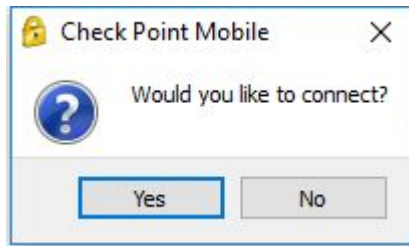
9) Select '2FA Authentication (Default)'. Then click 'Next'



10) Then the setup will be completed. Click 'Finish'

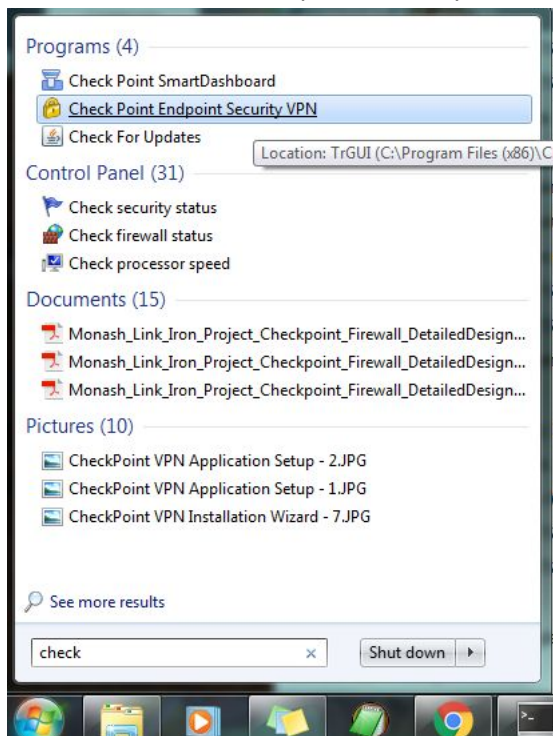


11) Try to connect and click 'Yes'

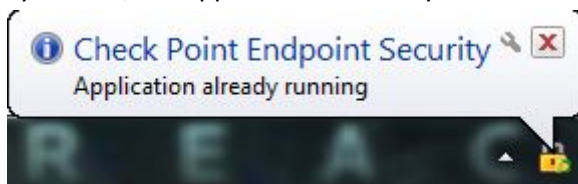


Logging in

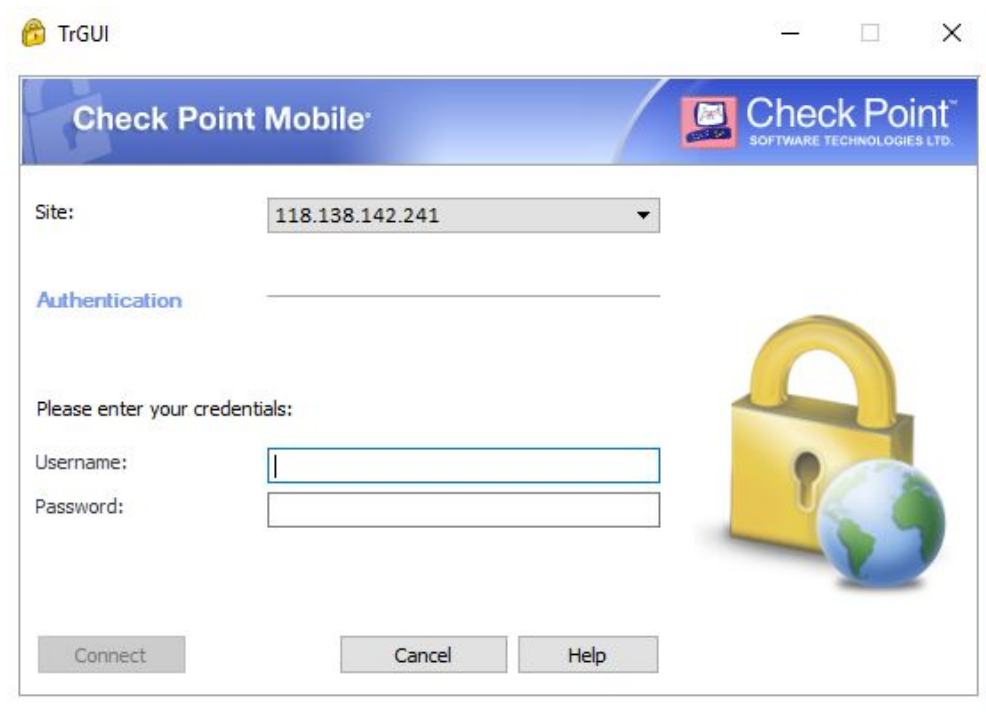
1) Launch "Check Point Endpoint Security VPN" application from Windows Start menu.



2) By default, the application is already active in the bottom right notification area.



- 3) Launch the application UI by double clicking the “Check Point Endpoint Security VPN” icon in the notification area. Login using your username and password. Then click ‘Connect’.



TrGUI

Check Point Mobile

Check Point
SOFTWARE TECHNOLOGIES LTD.

Site: 118.138.142.241

Authentication

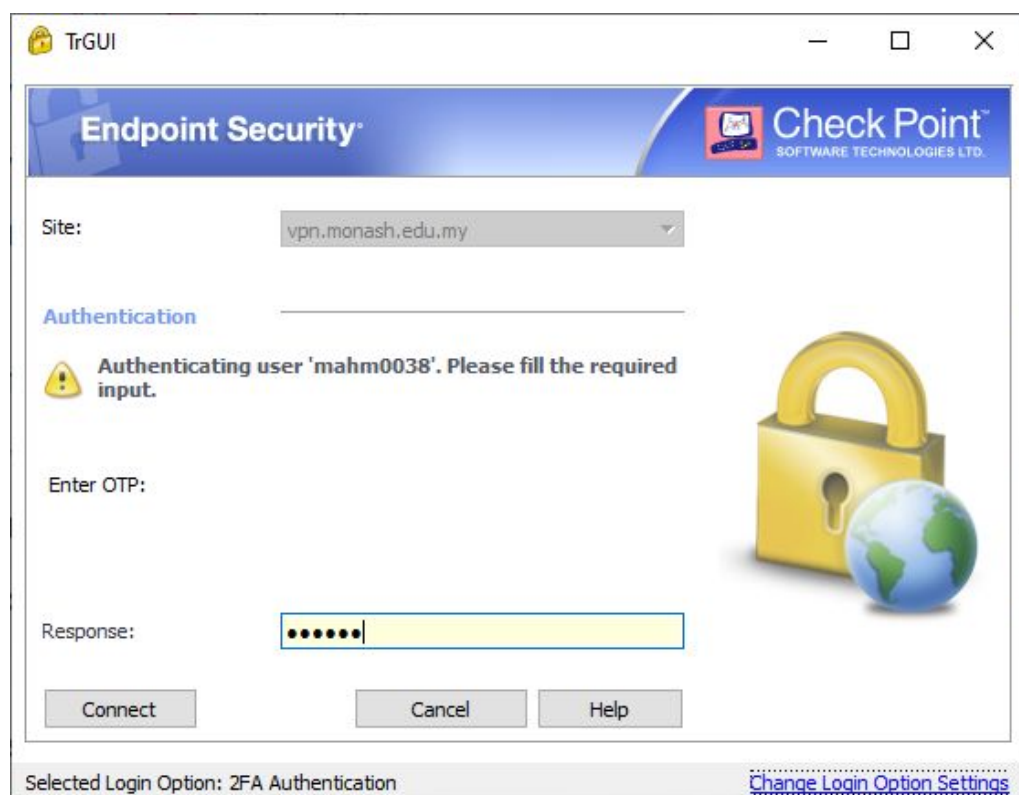
Please enter your credentials:

Username:

Password:

Connect Cancel Help

- 4) Once you successfully connected, you will redirect to this page where you need to enter your OTP. You will receive your OTP inside your email. Open your email. Once you key-in your OTP, click ‘Connect’.




TrGUI

Endpoint Security

Check Point
SOFTWARE TECHNOLOGIES LTD.

Site: vpn.monash.edu.my

Authentication

 Authenticating user 'mahm0038'. Please fill the required input.

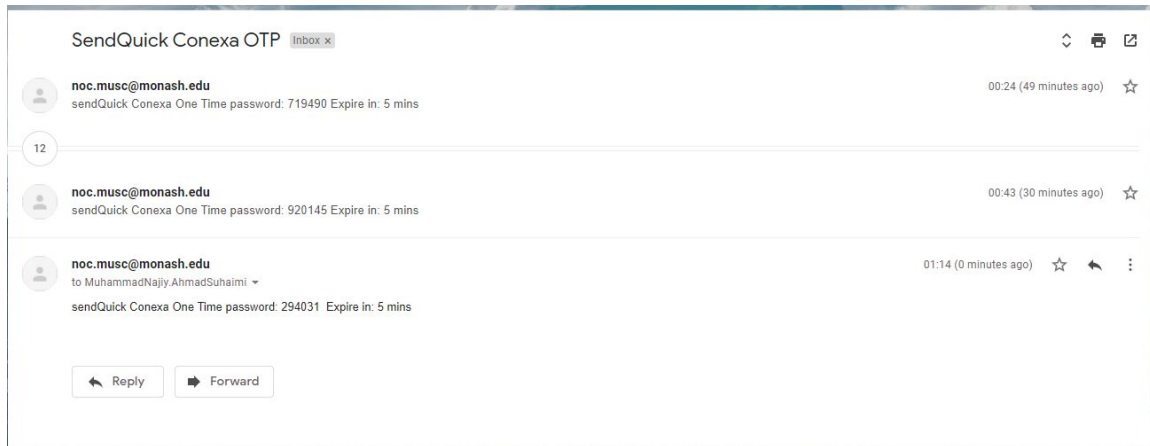
Enter OTP:


Response:

Connect Cancel Help

Selected Login Option: 2FA Authentication [Change Login Option Settings](#)

5) The email for the OTP will receive like this. It consists of 6 digits with validity of 5 minutes.



6) When it is connected the UI will automatically close & the icon will turn  with status saying it is connected to 118.138.142.241 in the notification area.