

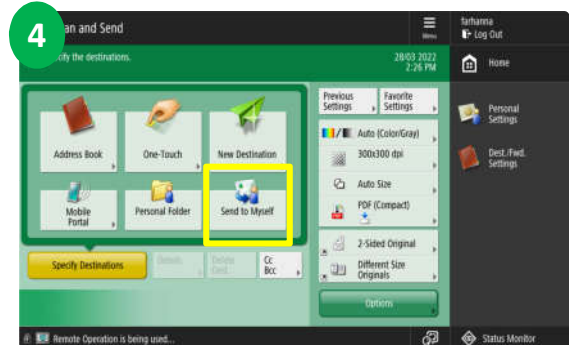
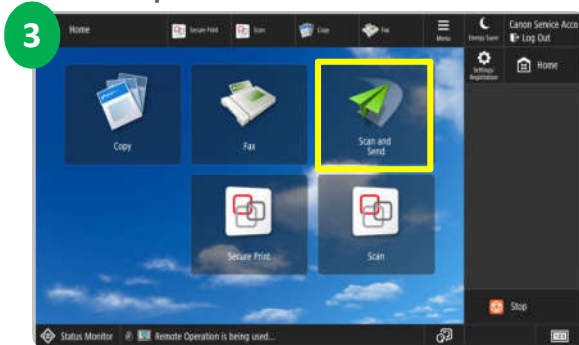
# 4

# Scan Function

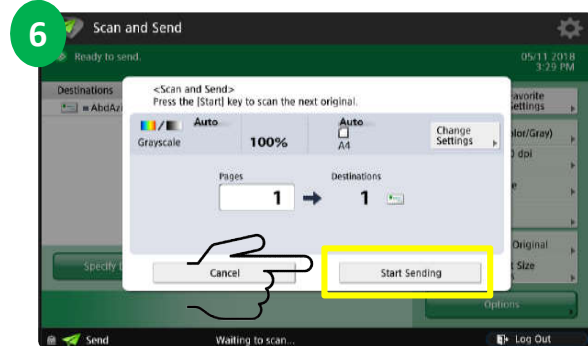
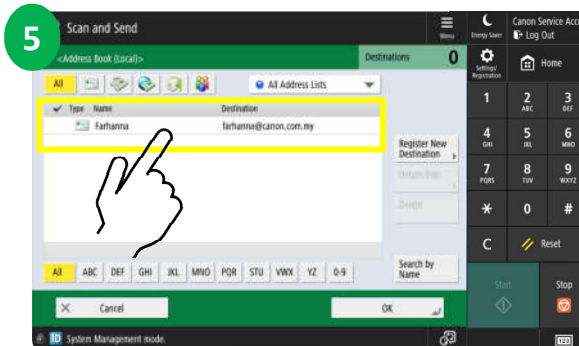
## Scan to Myself



1. User walk to the nearest Canon MFD.
2. Tap user ID card at the card reader attached on MFD.



3. Select <Scan & Send> at the main menu.
4. Select <Scan to Myself>.



5. Screen will show your email address. Place document on feeder and press <Start> button to start scanning
6. Press <Start Sending> button to complete the job.