

Speakers' Profiles

Xianke Shi, PhD

Regional Application Specialist, ZEISS TASC APAC

Dr. Xianke Shi studied his PhD on Biophysics at National University of Singapore from 2004 to 2008, focusing his research on quantification of biomolecular interactions in living cells and living zebrafish embryos with Fluorescence Correlation Spectroscopy. From 2008 to 2010, he worked as a postdoctoral fellow at NUS and European Molecular Biology Laboratory Heidelberg, Germany, where he worked on light sheet based microscopy and in vivo single molecule detection.

Since January 2011, Xianke has been with ZEISS Singapore as a Regional Application Specialist. He is mainly in-charge of widefield bioscience microscopy, high content analysis systems and Light Sheet Fluorescence Microscope.

Satoshi Ogawa, PhD

Senior Research Fellow, BRIMS, Monash University Malaysia

Dr. Satoshi Ogawa joined Monash University, in 2006 as a Lecturer. He obtained his BSc from Tokyo University of Marine Science and Technology, MSc from the University of Tokyo and PhD degree from Nippon Medical School in Physiology in 2006. His current research interest is the neural mechanism linking emotion and addiction. He has strong expertise in molecular morphology and neuroimaging.

He has published in internationally renowned journals such as Endocrinology and Proceedings of National Academy of Science, USA. As a young researcher, he has received Best Poster Presentation Award in the International Symposium on Reproductive Physiology of fish and the Jimmie Dodd Memorial Prize for Comparative Endocrinology.



For more information, please contact our local ZEISS representative:

Ms Rachael Lim

Email: rachael.lim@zeiss.com

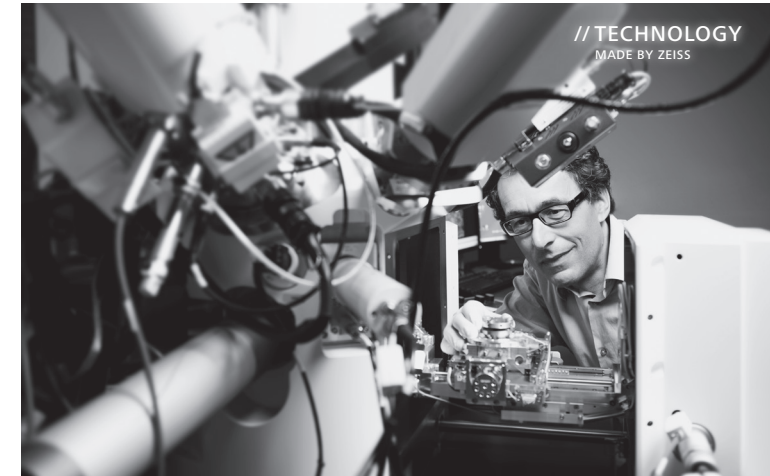
HP: 012-3276 072

For registration, please contact:

Ms Jasmin Kaur

Email: jasminder.kaur@monash.edu

The moment "I think" becomes "I know".
This is the moment we work for.



BRIMS and ZEISS:

Light Sheet Fluorescence Microscopy (LSFM)
Workshop

5 - 7 August 2014, Tuesday to Thursday
09:00 AM - 05:00 PM

Brain Research Institute Monash Sunway (BRIMS)

Building 3, Level 3

Jeffrey Cheah School of Medicine and Health Sciences

Monash University Malaysia

Jalan Lagoon Selatan

47500 Bandar Sunway, Selangor Darul Ehsan

Malaysia



Light Sheet Fluorescence Microscopy Lecture and Hands-on Session

BRIMS, in collaboration with ZEISS, is conducting Light Sheet Fluorescence Microscopy Lecture and Hands-on Sessions to share knowledge with the market about the newest technology that enable new insights into the micro and nano worlds.

This workshop provides detailed knowledge and technological information about ZEISS Lightsheet Z.1 in respect to its features, data handling, sample preparation and application in biomedical sciences.

Follow the development of your most valuable specimens in a gentle and stable environment with up to a thousand times less light exposure with LSFM which makes 3D imaging extremely fast and light efficient. Learn how your research can benefit.

Workshop Details

Dates:

5 - 7 August 2014, Tuesday to Thursday
9:00 AM to 5:00 PM

Venue:

Brain Research Institute Monash Sunway (BRIMS)
Building 3, Level 3
Jeffrey Cheah School of Medicine and Health Sciences
Monash University Malaysia
Jalan Lagoon Selatan
47500 Bandar Sunway, Selangor Darul Ehsan
Malaysia

Registration:

All are free to attend but as space is limited, seat reservations are on first-come, first-served basis. Kindly email your name, organization, contact number and your preferred hands-on slot to BRIMS representative, Ms. Jasminde Kaur at jasminder.kaur@monash.edu before 31 July 2014.

Agenda

Day One: 5 August 2014 (Tuesday)

9:00 AM	Registration
9:30 AM	Lecture: Light Sheet Fluorescence Microscopy
11:00 AM	Tea Break
11:30 AM	Lecture: Applications of LSFM Technique in Neuroscience Research
12:30 PM	Lunch
2:00 PM	Practical Session (Group 1 - Outstation Participants)
5:00 PM	End of Session

Day Two: 6 August 2014 (Wednesday)

9:00 AM	Practical Session (Group 2)
12:00 PM	Lunch
2:00 PM	Practical Session (Group 3)
5:00 PM	End of Session

Day Three: 7 August 2014 (Thursday)

9:00 AM	Practical Session (Group 4)
12:00 PM	Lunch
2:00 PM	Practical Session (BRIMS Group)
5:00 PM	End of Session

For more information, please contact our local ZEISS representative, Ms Rachael Lim at rachael.lim@zeiss.com or 012-3276 072 (Mob.)

ZEISS Lightsheet Z.1 (Light Microscopy)

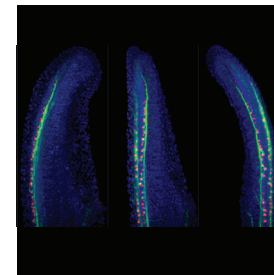


Imagine you had access to an imaging system that could perform fluorescence imaging on large, living samples, with virtually no phototoxicity or bleaching and with high temporal resolution.

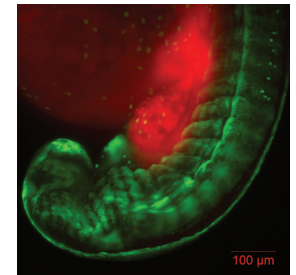
Lightsheet Z.1 is a completely novel technique in biomedical research, dedicated for Live Cell Imaging. It is the first commercially available multiview Light Sheet Fluorescence Microscope (LSFM) of its kind that allows you to record the development of large, living samples and deliver exceptionally high information content in a fraction of the time. Excellent knowledge of its theory and application is a prerequisite for experimental success.

It is also fast. Lightsheet Z.1 gives you the tools you need to work at unprecedented speed and acquire images of your whole sample volume at sub-cellular resolution – in a fraction of the time it takes using other techniques.

Find out more at www.zeiss.com/lightsheet



Zebrafish Tail
Dr. Eyleen Goh and Ms Leong Wan Ying
Duke-NUS, Singapore
Acquired on the Lightsheet Z.1



Zebrafish Muscle Development
Prof. Philip Ingham and Dr. Ono Yosokue
IMCB A*Star Biopolis, Singapore
Acquired on the Lightsheet Z.1