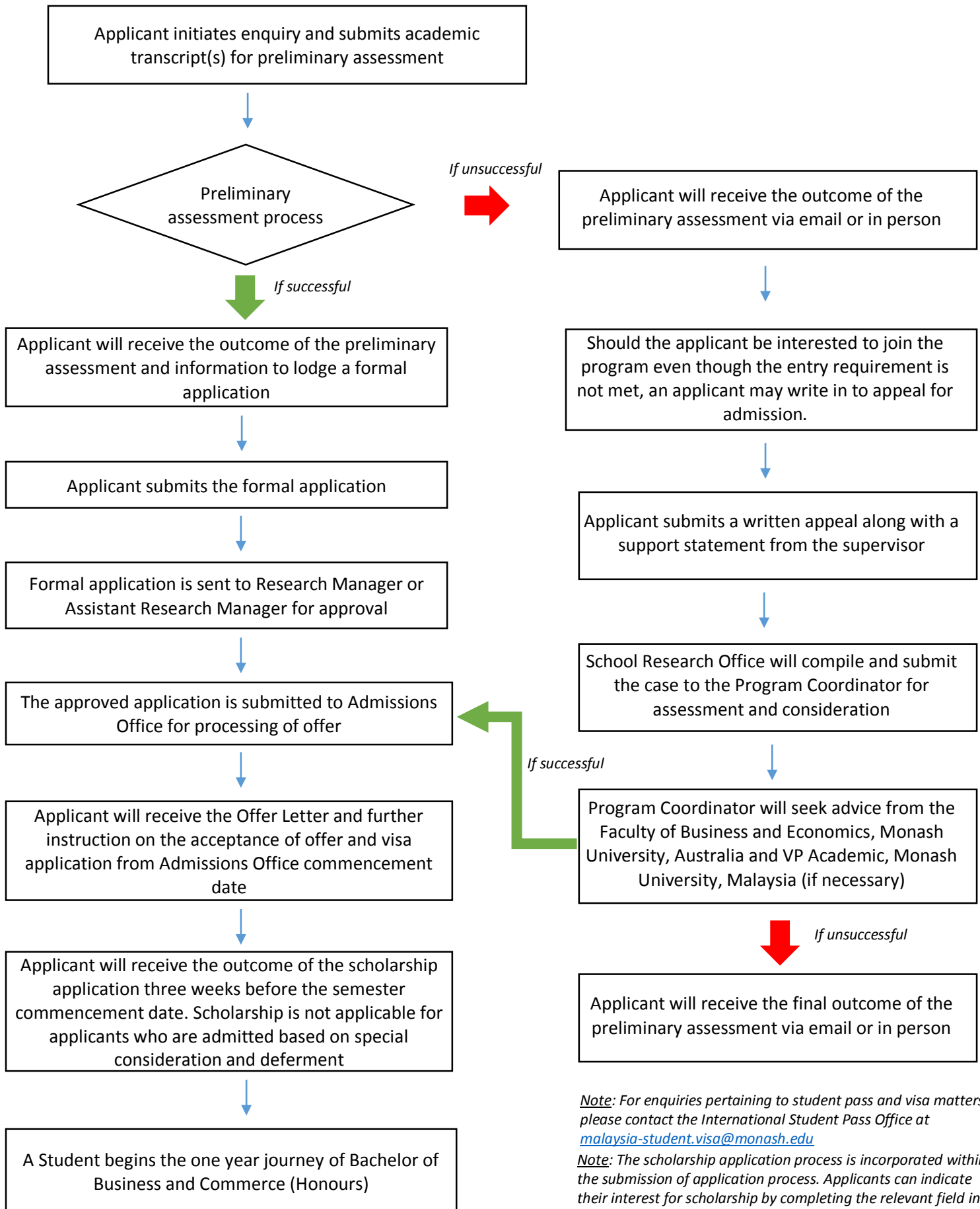


Application Process Flow for Postgraduate Diploma in Business and Commerce



Note: For enquiries pertaining to student pass and visa matters, please contact the International Student Pass Office at malaysia-student.visa@monash.edu

Note: The scholarship application process is incorporated within the submission of application process. Applicants can indicate their interest for scholarship by completing the relevant field in the 'Supervisory Form'.