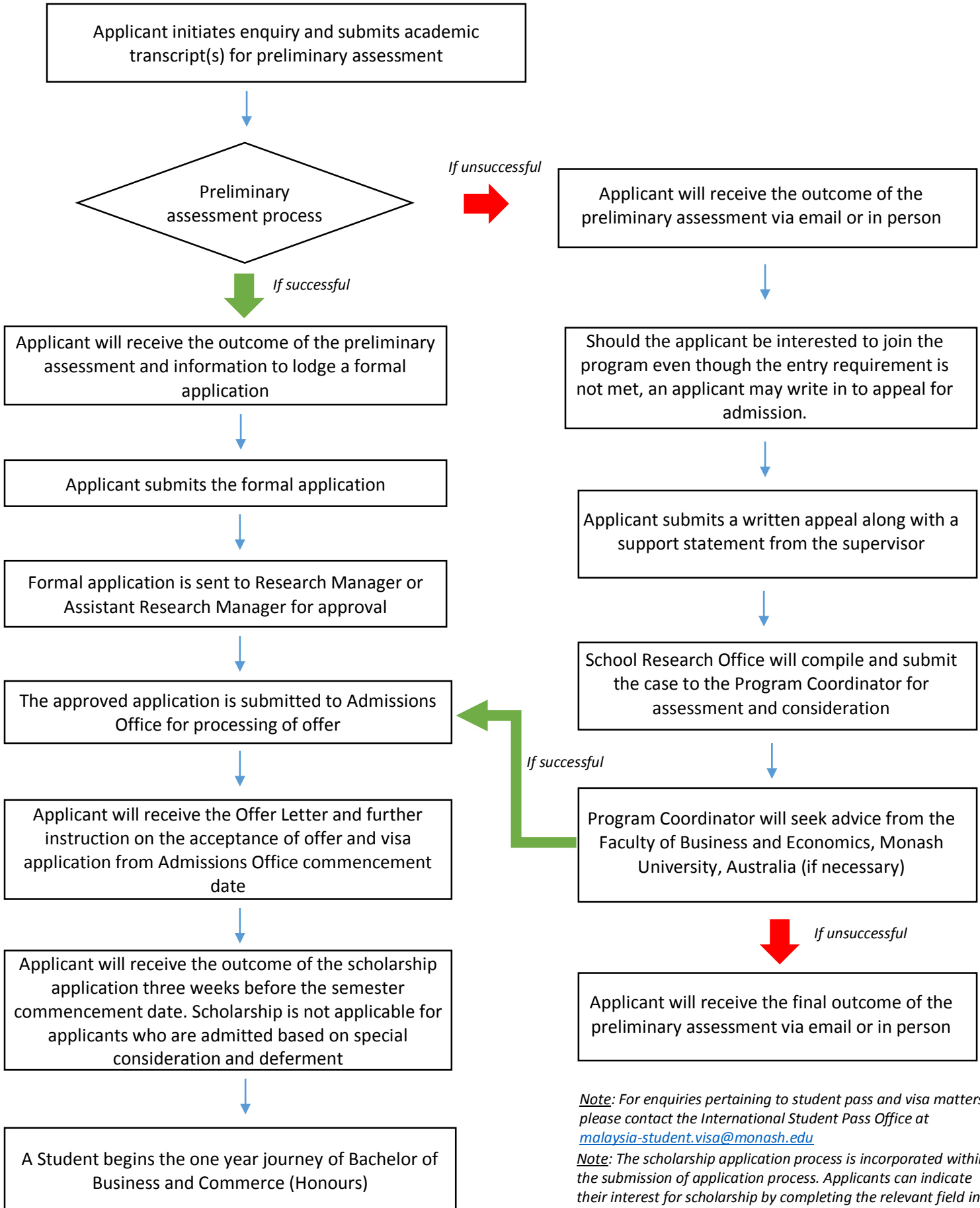


### Application Process Flow for Bachelor of Business and Commerce (Honours)



*Note:* For enquiries pertaining to student pass and visa matters, please contact the International Student Pass Office at [malaysia-student.visa@monash.edu](mailto:malaysia-student.visa@monash.edu)

*Note:* The scholarship application process is incorporated within the submission of application process. Applicants can indicate their interest for scholarship by completing the relevant field in the 'Supervisory Form'.